



# PC Case CST350 PLUS



## Introduction

The CST350 PLUS is a very small Micro-ATX case with a capacity to fit high-end graphics cards max to 320mm length. Support ATX or SFX PSU and vertical VGA installation. The CST350 PLUS is especially engineered for gamers with its sleek design, highly customized installation, and small size powerful system.

## Features



### USB Type-C Design

One USB Type-C and two USB3.0 for faster data transfer



### 3.0 USB Port

For high speed transferring



### The smallest M-ATX case

- The smallest M-ATX case
- Support ATX or SFX PSU
- Support 240mm radiator
- Tool-free 4 panel design
- High speed USB3.1 Type-C Gen2
- Support vertical VGA installation
- Pre-install 2 fans, support up to 7 fans



# PC Case CST350 PLUS

## Product Overview

### The best small case

391(L) x 185(W) x 303(H)mm, the exquisite compact design, especially suitable for modern house, making it an ideal choice for space-saving.



Mesh covers on the front plates  
keep cool for long use





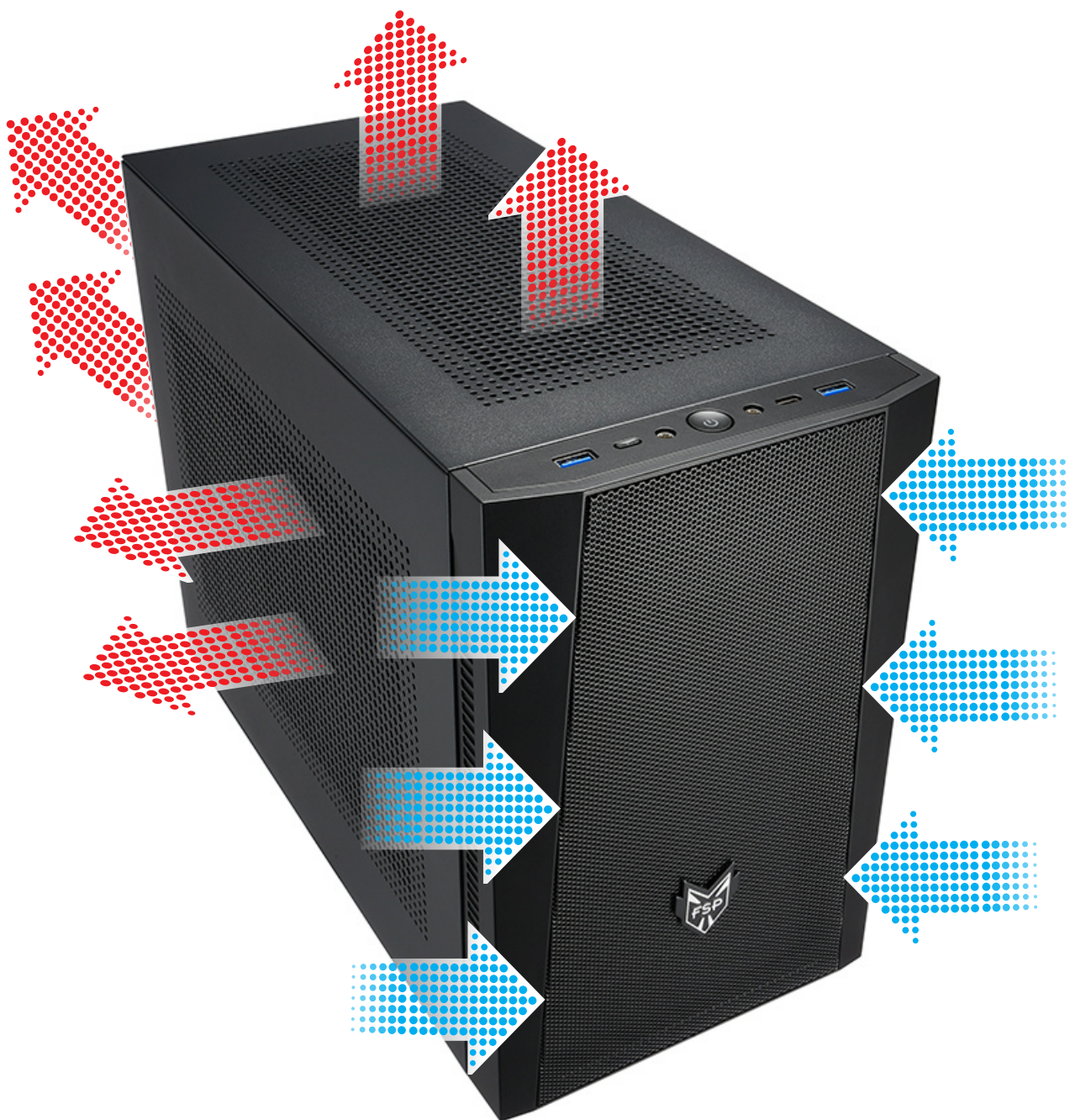
PC Case

# CST350 PLUS

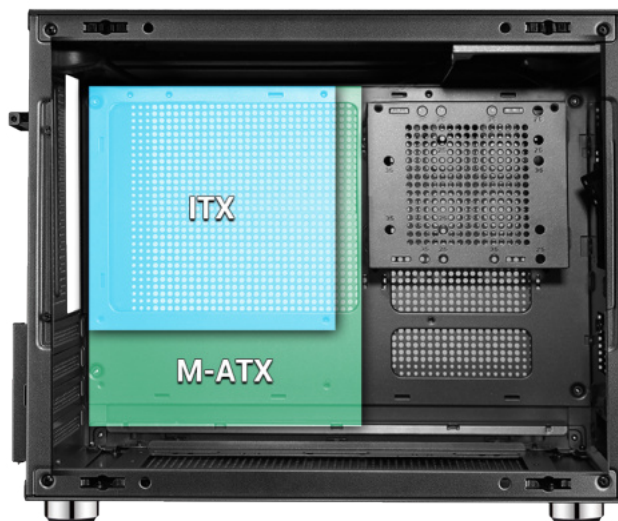
## Product Overview

### Keep cool for long use

Cooling hole design on the top, bottom, front and side plates, with magnetic dust-proof mesh covers at 4 sides that keeps the dust out while enabling an optimal airflow efficiency.

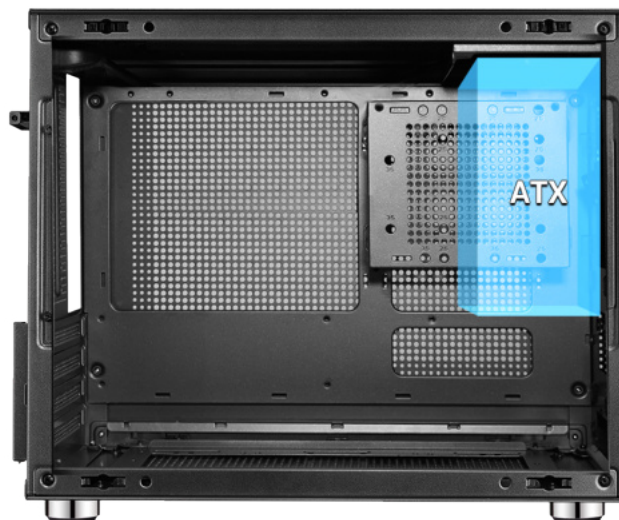


## Product Overview



### Support M-ATX/ITX MB system

Two kinds of motherboard options for you to configure your unique system as you want.



### Support SFX / ATX power supply

#### For M-ATX system

Support the installation of M-ATX motherboard for higher compatibility and higher hardware expandability. When installing the M-ATX motherboard, the power supply should be mounted on the front panel side.

#### Air cooling

- When installing a vertical graphics card, the maximum height of the CPU cooler is 88mm
- When installing a horizontal graphics card but not installing the side frame is, the maximum height of the CPU cooler is 155mm

#### Water cooling

- SFX power supply is used.
- When installing a vertical graphics card, a 240mm water-cooling radiator can be installed horizontally at the bottom plate
- When installing a horizontal graphics card, a 240mm water-cooling radiator can be installed vertically at the side frame.

## Product Overview

Ultra space-saving for desk



### **ATX PSU installed on the front panel**

- Horizontal VGA length 320mm
- Vertical VGA length 245mm
- Support 240mm water cooling radiator at the bottom

### **SFX PSU installed on the MB's right side**

- Horizontal VGA length 320mm
- HDD is not installed in the PSU rack
- Vertical VGA length 245mm

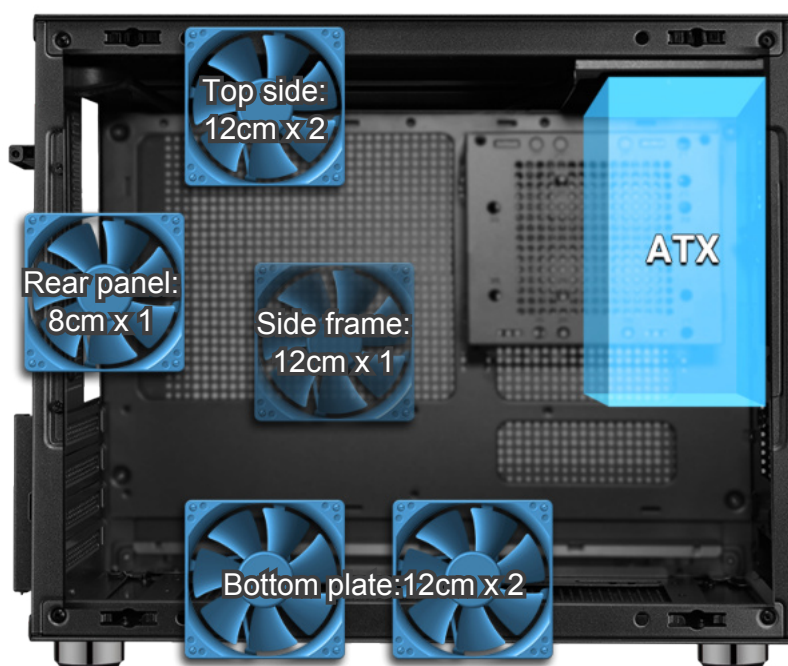
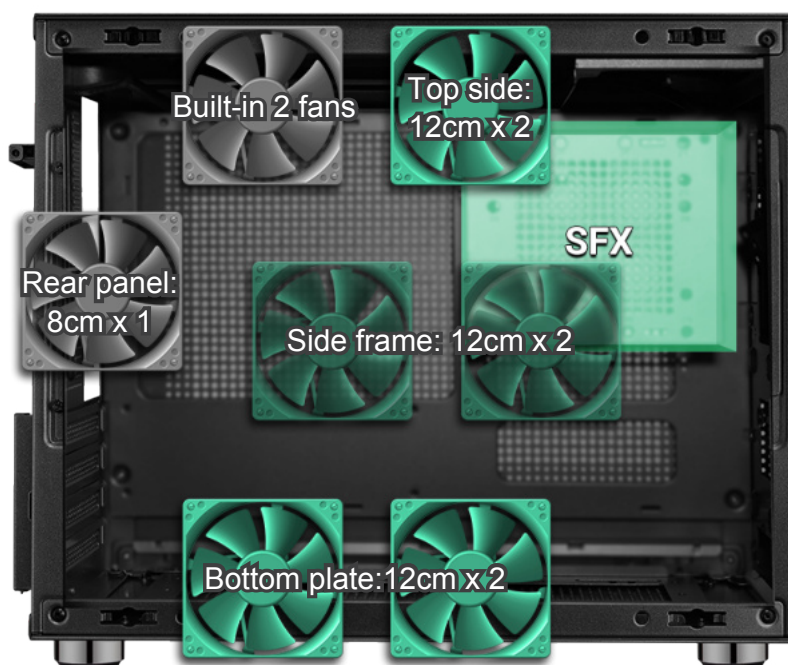
### **SFX PSU installed on the front panel**

- Horizontal VGA length 320mm
- Vertical VGA length 245mm
- HDD is not installed in the PSU rack
- Vertical VGA length 270mm



## Product Overview

Best airflow efficiency for optimal cooling



- When using a vertical graphics card, the fans cannot be mounted on the side and rear panels.
- Beside the rear fan position, other fan positions can be mounted 2 HDD or SSD
- When installing ATX power supply, only one fan can be mounted on the top and the side panel.



# PC Case CST350 PLUS

## Product Overview

Tool-free easy installation for your convenience



## Specifications

			
Model		CST350 Plus	
Type		Micro ATX	
Color		Black	
Materials		0.8mm SPCC	
Materials		NW: 5.2kg	
Dimensions (D x W x H)		391x185x303mm	
MotherBoard Support		Micro ATX or Mini-ITX	
External I/O port		USB3.0 x 2, USB Type-C, HD Audio	
Maximum CPU Cooler Height		Vertical VGA: 88mm Without vertical VGA and fan bracket: 155mm	
VGA Card Length		Vertical VGA with ATX PSU: 245mm Vertical VGA with SFX PSU: 320mm Horizontal VGA with ATX PSU: 320mm	
Expansion Slots		4	
Dust Filters		Top/Side/Bottom	
Power Supply Type		ATX or SFX	
Drive Bay	3.5" HDD	3	
	2.5" SSD	3	
Preinstall Fan		Top: 12cmx1, Rear: 8cmx1	
Fan&Water Cooler Support	Top	120mm x 2 / 120mm x 1 with ATX PSU	
	Side	120mm x 2 or 240mm Radiator(ITX+Horizontal VGA)	
	Bottom	120mm x 2 or 240mm Radiator(ITX+Vertical VGA)	
	Rear	80mm x 1(without Vertical VGA)	
Max Radiator Support		240mm(Only ITX motherboard)	